

Visio Tutorial: Database Model Design

IT 4153 Advanced Database

J.G. Zheng
Spring 2012



Overview / Introduction

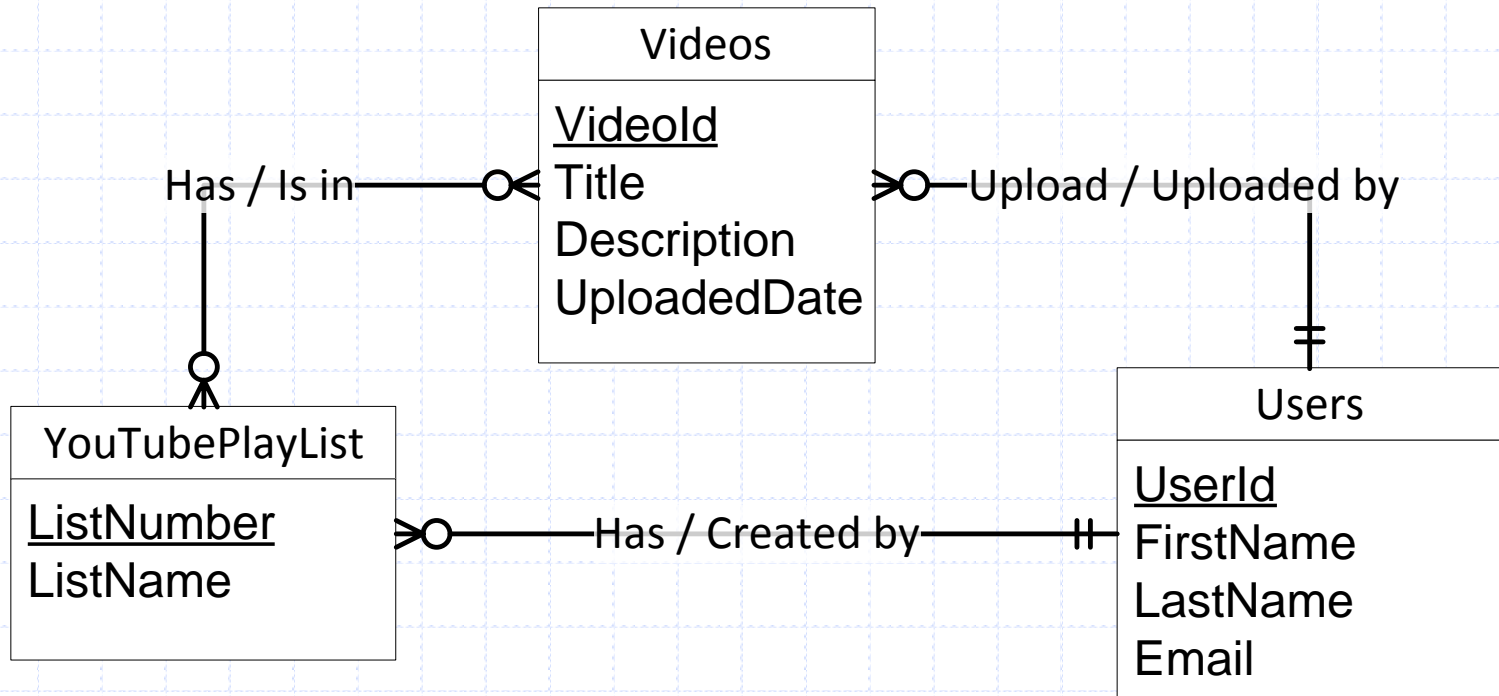
◆ Use Visio for database modeling

◆ **Note**

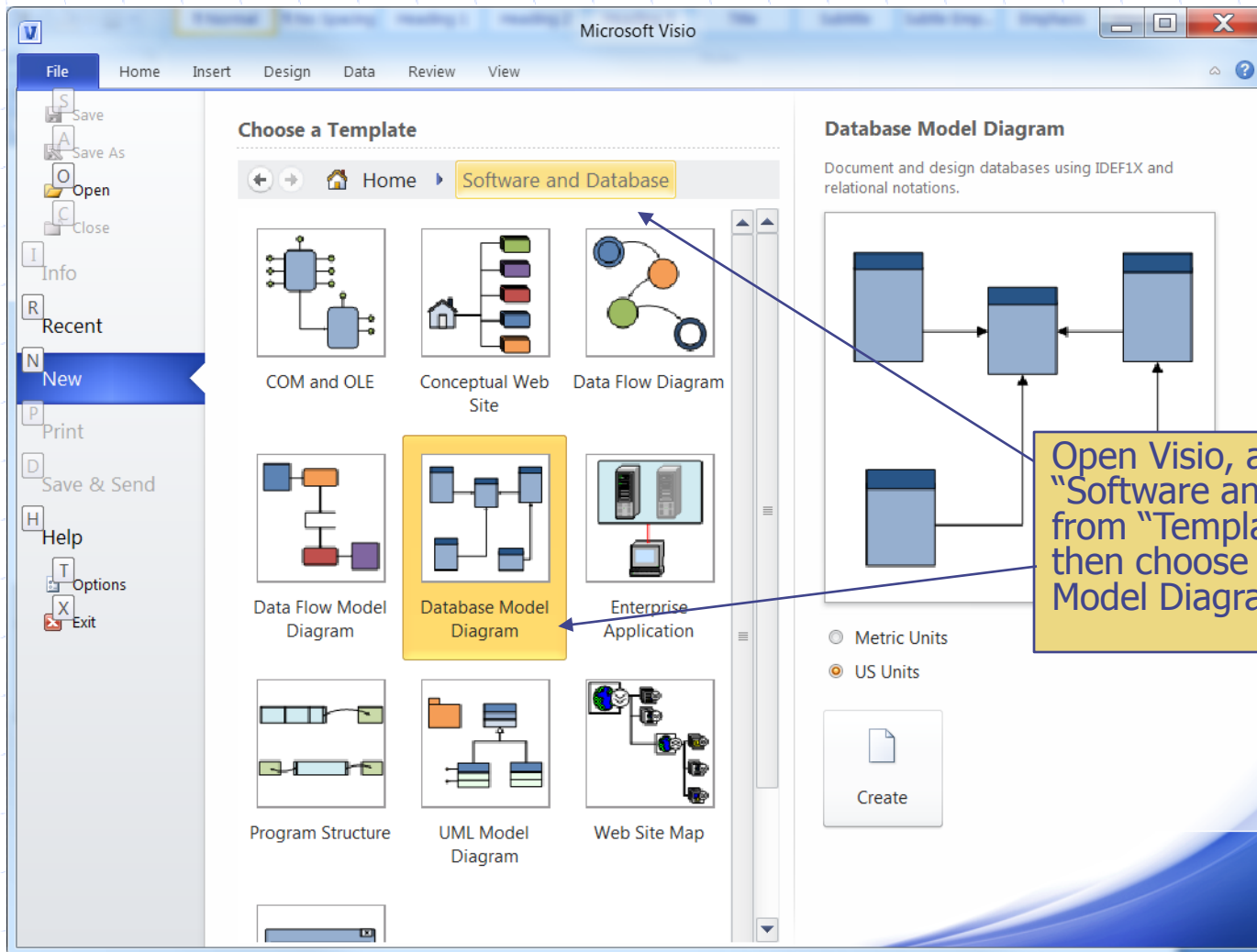
- The database model diagram template in Visio is really a logical database model (plus some physical model), not really a conceptual ERD model

Starting from an ERD Example

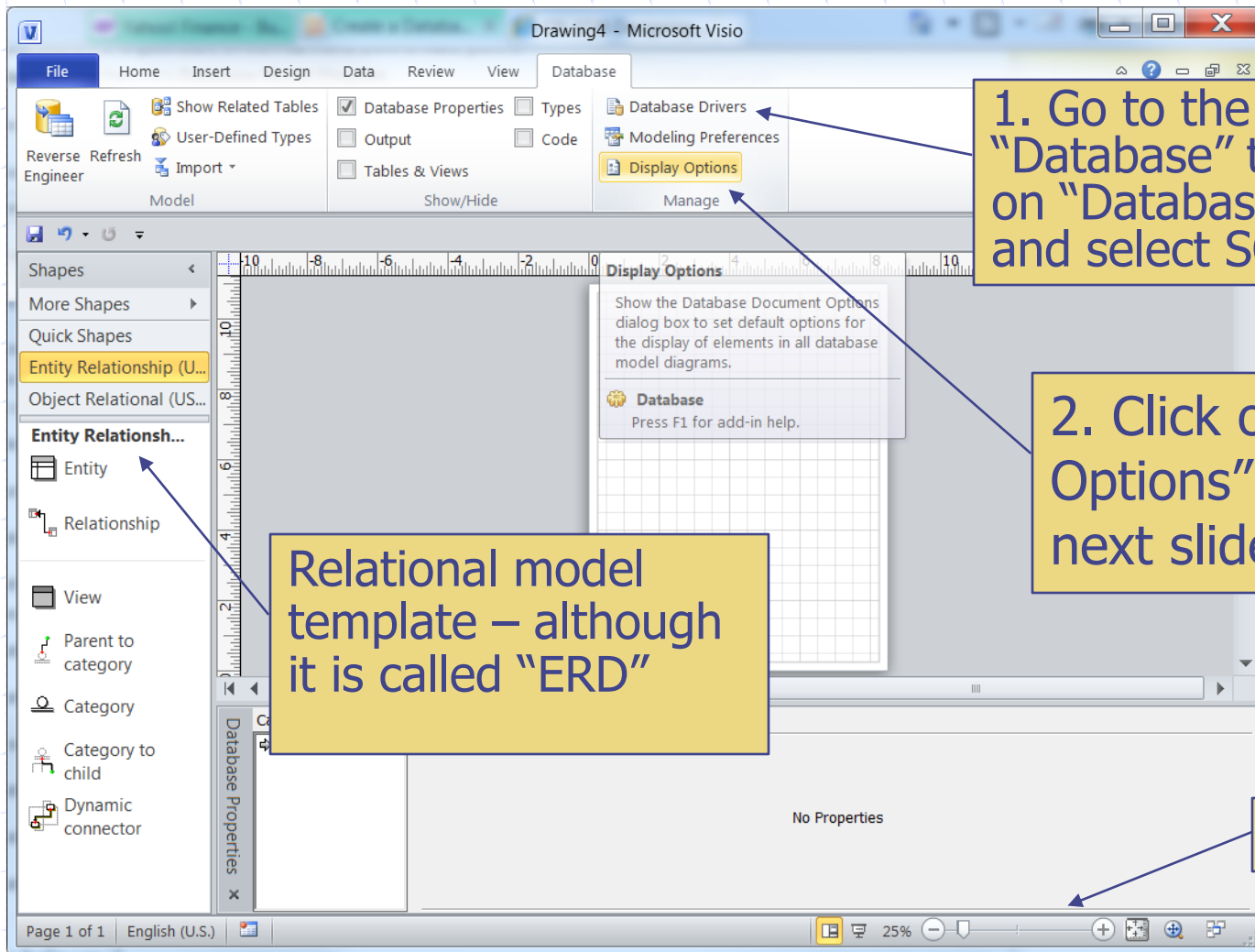
- ◆ We will create a logical model based on this ERD



Open Visio 2010



Settings in the Database Tab



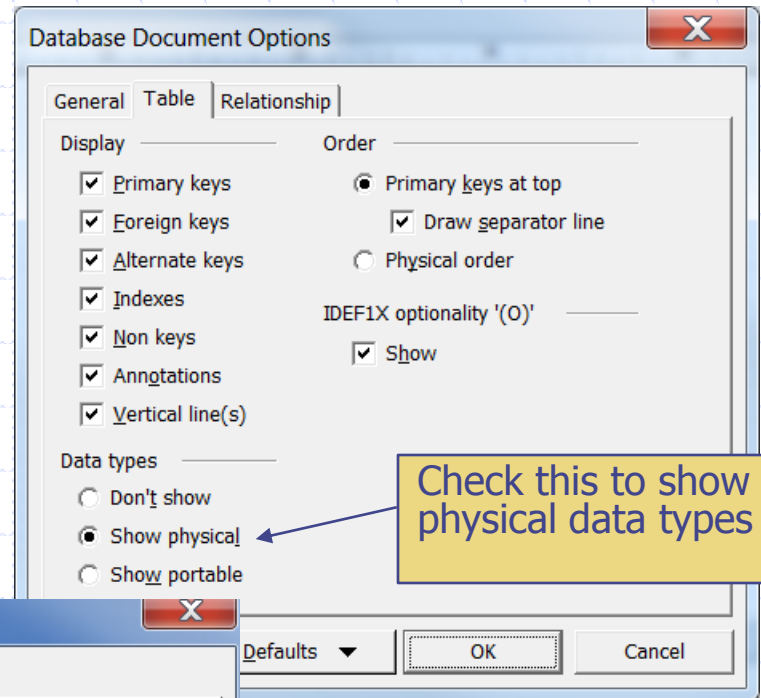
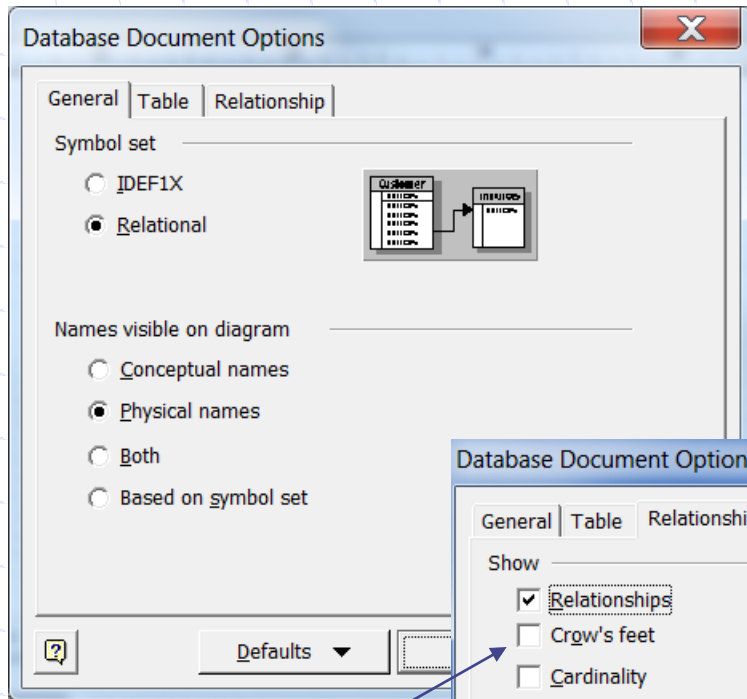
1. Go to the "Database" tab; click on "Database Drivers" and select SQL Server.

2. Click on "Display Options" and see next slide

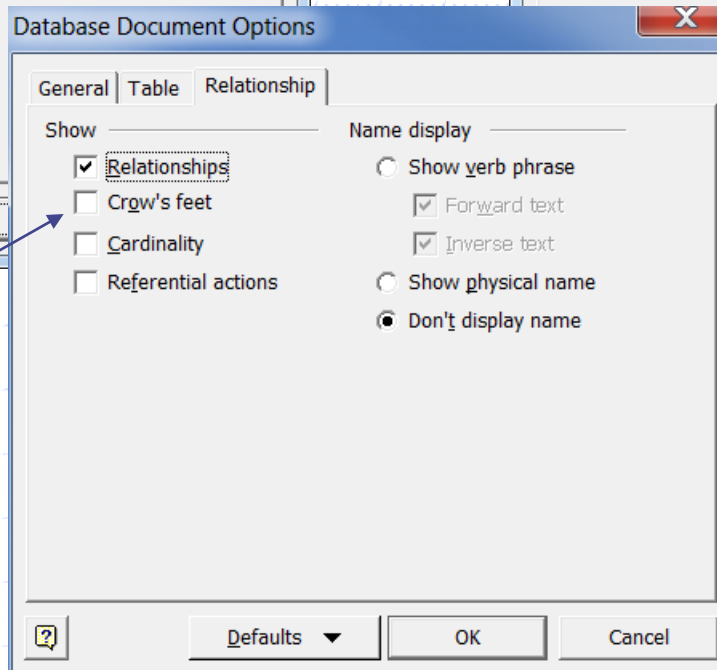
Relational model template – although it is called "ERD"

Zooming

Display Options



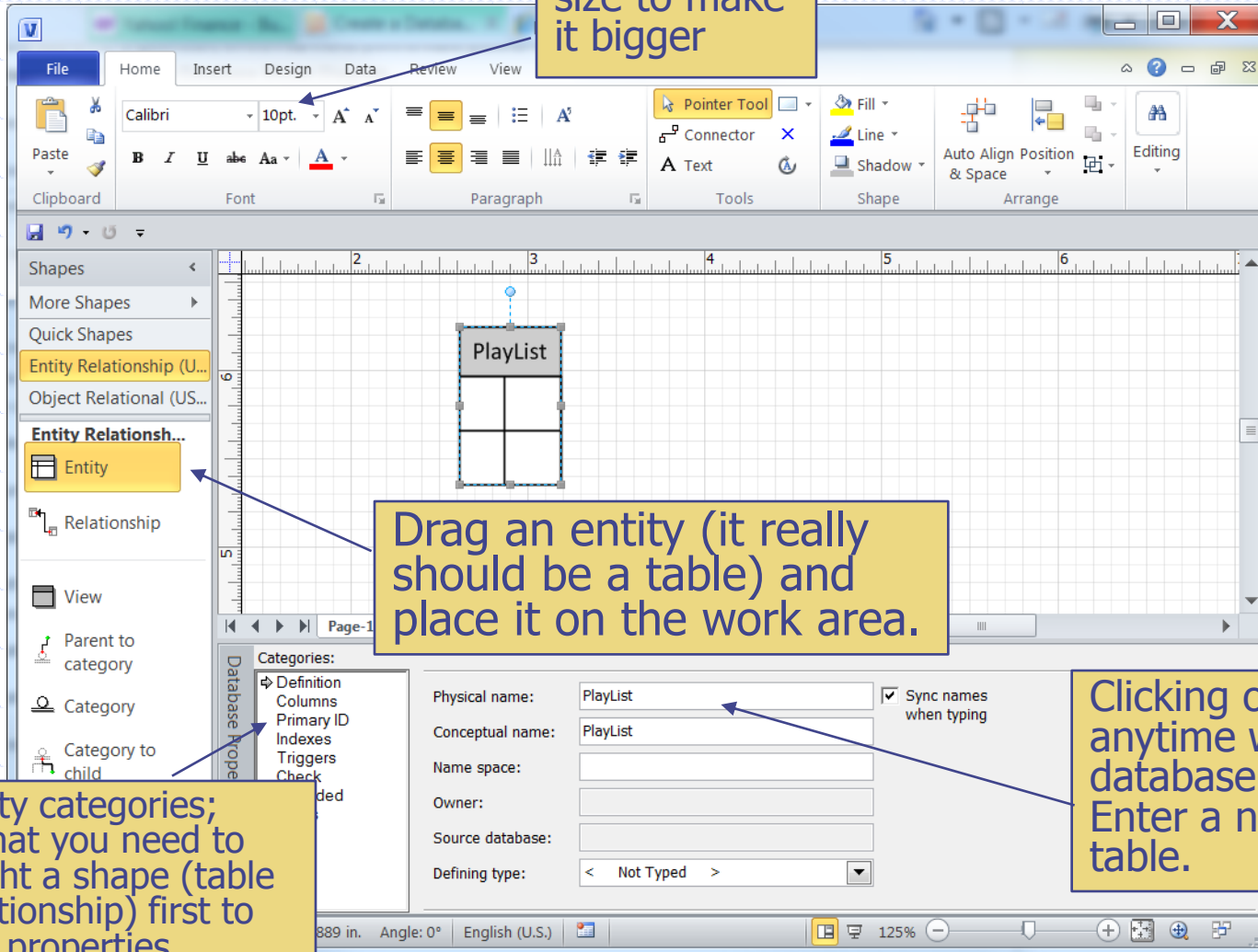
Check this to show physical data types



You may want to show crow's feet

Create the First Table

Change font size to make it bigger



Drag an entity (it really should be a table) and place it on the work area.

Clicking on the table anytime will bring up this database property panel. Enter a name for the table.

Property categories; note that you need to highlight a shape (table or relationship) first to see its properties.

Define Columns

The screenshot shows the Microsoft Visio interface with the Database Properties panel open. The panel displays the table structure for 'Playlist' with columns: ListNumber (int, PK, Req'd, ListNumber identifies Playlist) and ListName (char(10), ListName is of Playlist). The 'Physical data type' is selected for Microsoft SQL Server.

Physical Name	Data Type	Req'd	PK	Notes
ListNumber	int	<input checked="" type="checkbox"/>	<input checked="" type="checkbox"/>	ListNumber identifies Playlist
ListName	char(10)	<input type="checkbox"/>	<input type="checkbox"/>	ListName is of Playlist

Database Properties Categories: Definition, Columns, Primary ID, Indexes, Triggers, Check, Extended, Notes.

Show: Portable data type Physical data type (Microsoft SQL Server)

No direct editing in the shape. Use "database properties" panel at the bottom

Continue to create other 2 tables directly transformed from entities.

Enter name, choose data type, required or not, primary key (PK) here based on the transformation guidelines; double-click a data type to edit column size.

Advanced properties for columns, such as an identity column

Define Relationships

Drag a relationship shape from the template. Connect the arrow end to the "one" side, and the other end to the "many" side. You may practice a while to move only the line end only (not the complete line).

When the red border appears, it's connected.

Object Relational (US units)

Entity Relationship (US units)

Entity

Relationship

View

Parent to category

Category

Category to child

Dynamic connector

PlayList		
PK	ListNumber	int
FK1	ListName UserId	nvarchar(50) nvarchar(20)

User		
PK	UserId	nvarchar(20)
	FirstName	nvarchar(20)
	LastName	nvarchar(20)
	Email	nvarchar(50)

The FK column is automatically added by Visio when the relationship line is connected. Sometimes you have another same column already. Just delete one which is not assigned as FK.

Visio will automatically detect the PK/FK pair. If not correct, click on the relationship and change it here.

Categories:

Definition
Name
Miscellaneous
Referential Action

Parent: User

UserId
FirstName
LastName
Email

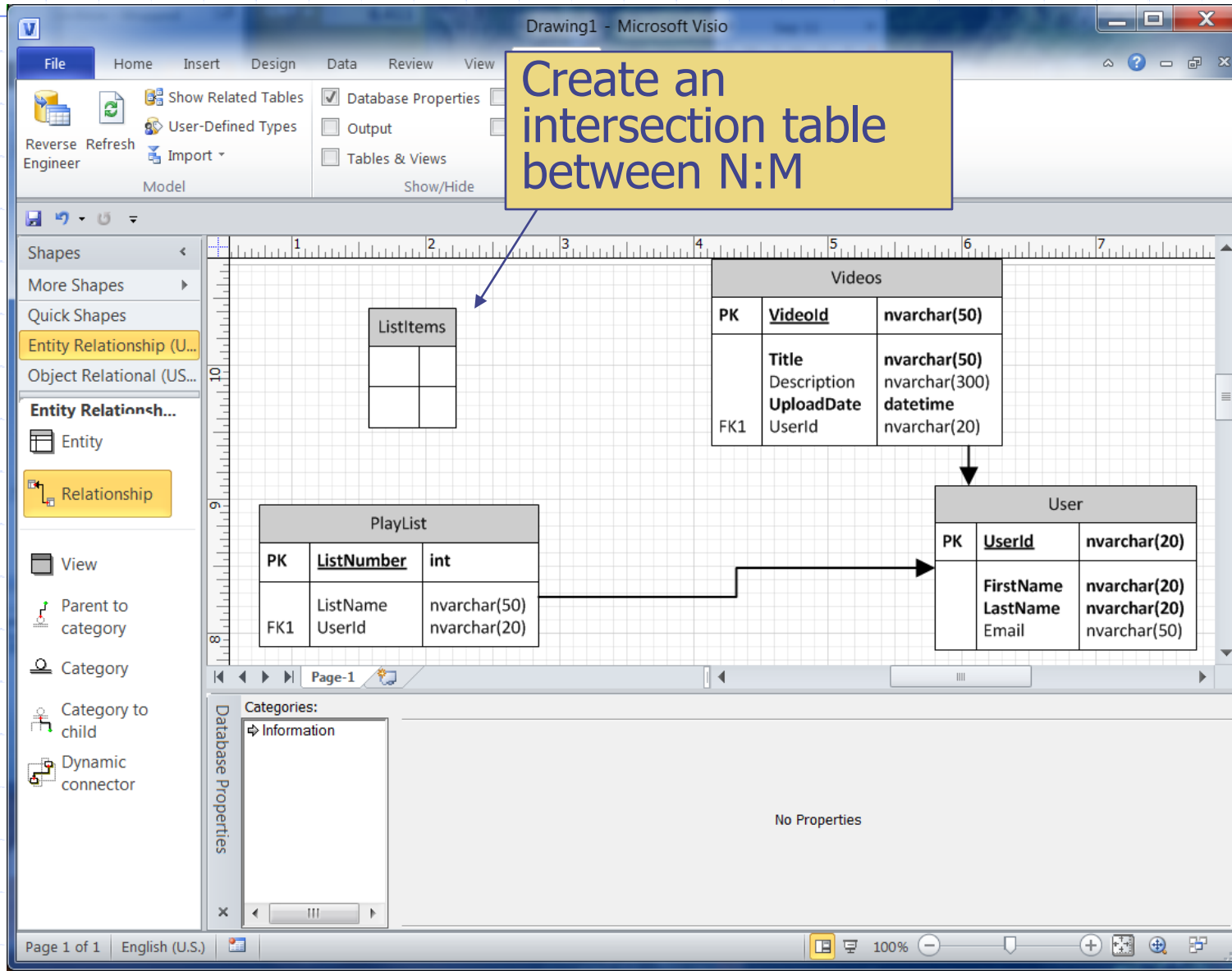
Foreign key role name:

<-- Associate -->

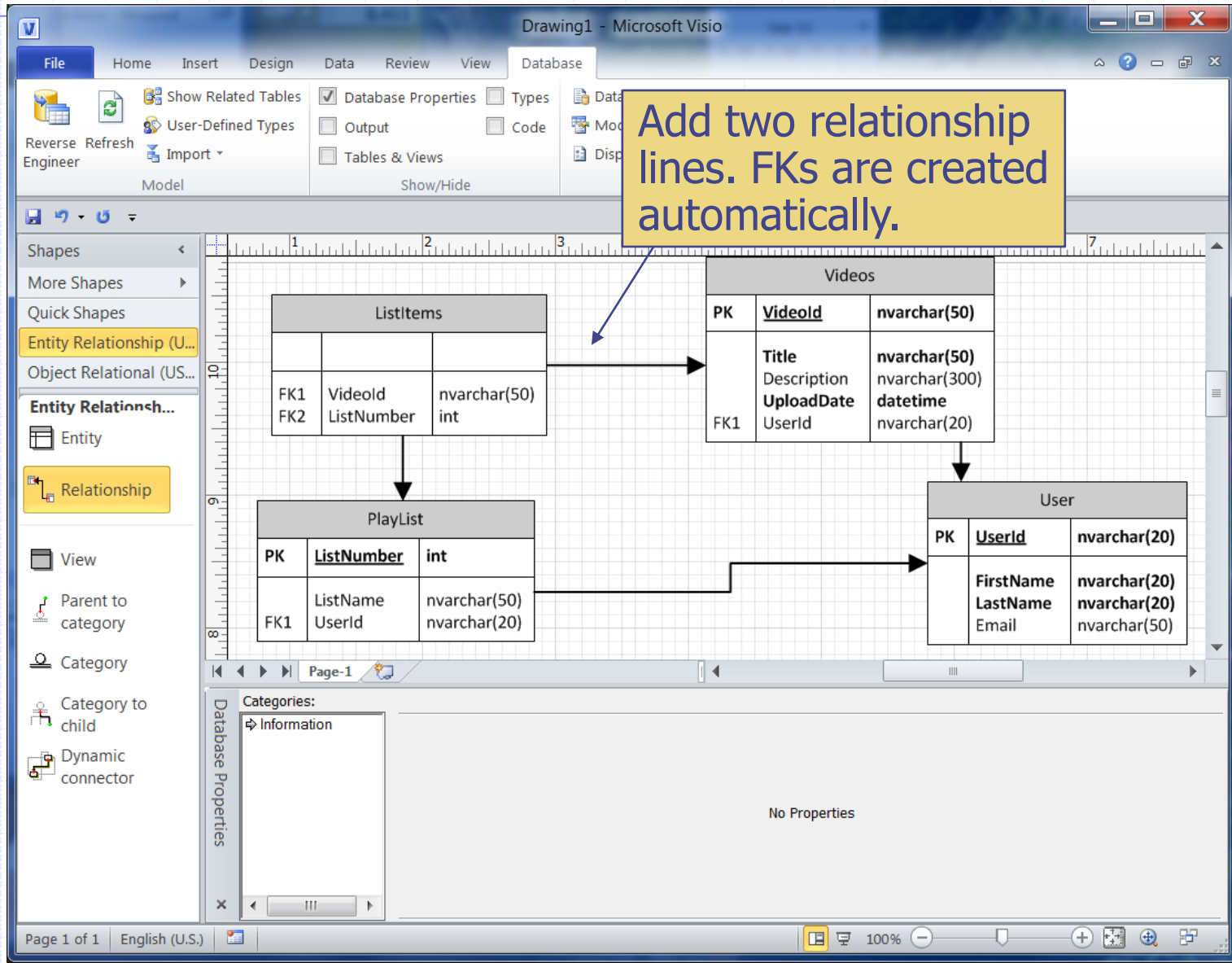
Child: PlayList

ListNumber
ListName
UserId

Transform N:M Relationship -1



Transform N:M Relationship -2



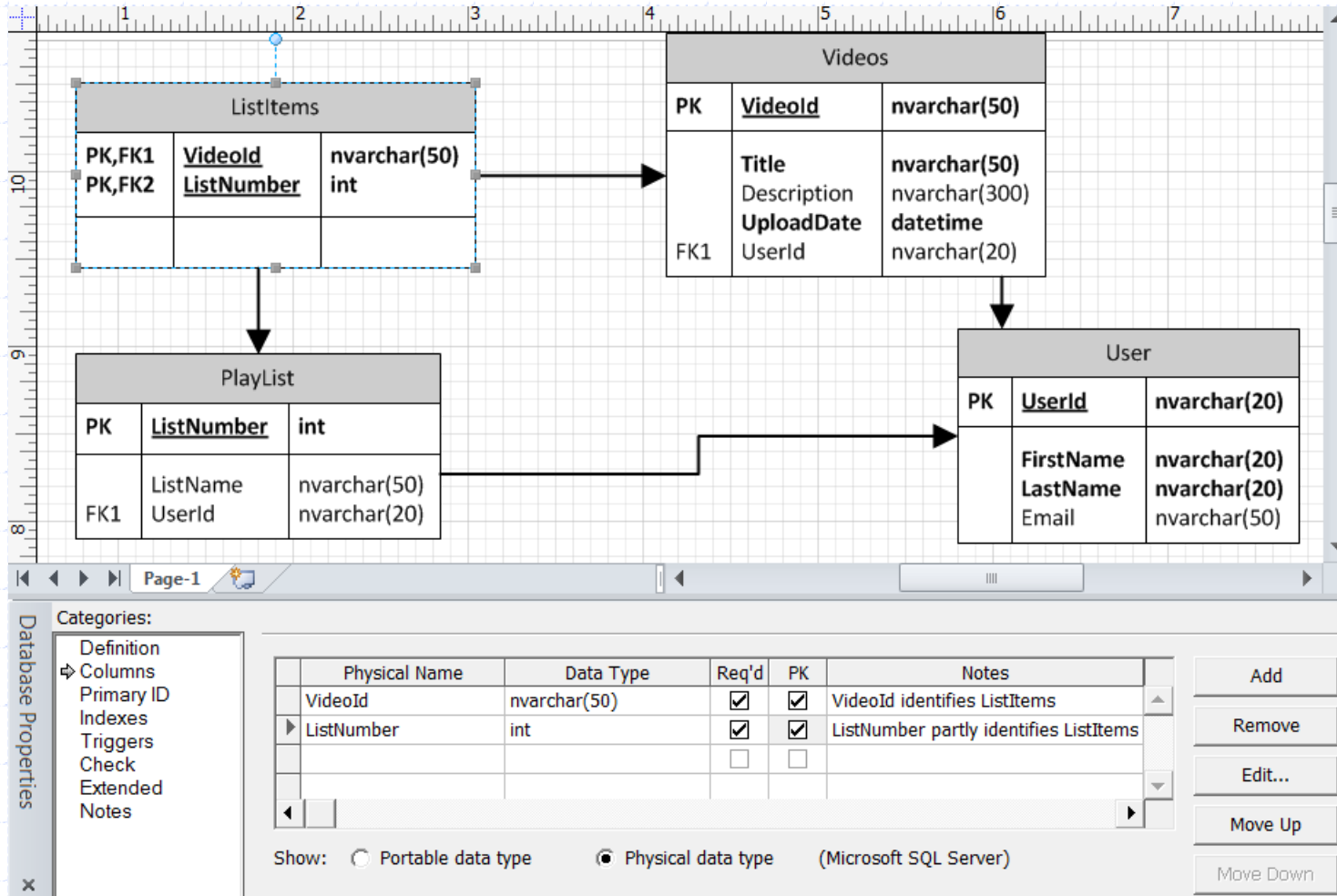
Transform N:M Relationship -3

Set the composite PK.

Entity	PK	Field	Data Type
ListItems	PK,FK1	VideoId	nvarchar(50)
ListItems	PK,FK2	ListNumber	int
Videos	PK	VideoId	nvarchar(50)
Videos	FK1	UserId	nvarchar(20)
Playlist	PK	ListNumber	int
Playlist	FK1	UserId	nvarchar(20)
User	PK	UserId	nvarchar(20)
User		FirstName	nvarchar(20)
User		LastName	nvarchar(20)
User		Email	nvarchar(50)

Physical Name	Data Type	Req'd	PK	Notes
VideoId	nvarchar(50)	<input checked="" type="checkbox"/>	<input checked="" type="checkbox"/>	VideoId identifies ListItems
ListNumber	int	<input checked="" type="checkbox"/>	<input checked="" type="checkbox"/>	ListNumber partly identifies ListItems

Completed



Additional Tutorials

◆ Create a database model

- <http://office.microsoft.com/en-us/visio-help/create-a-database-model-also-known-as-entity-relationship-diagram-HA010115477.aspx>
- Check out section 1 (should be 0, "create a new model diagram from scratch") and 1

◆ Database Concepts 5th edition Online Appendix D

- <http://www.pearsonhighered.com/kroenke>

◆ Visio 2007 video tutorial (there are three parts)

- <http://www.youtube.com/watch?v=1BYt3wmkgXE>